

# Case studies

## Lots Road Power Station Development London SW10

Residential-led mixed-use development including the iconic Lots Road Power Station and two towers of 37 and 25 storeys and low-rise apartments.

Client: Hutchinson Property Group  
Architect: Midgard Design Services  
Contractor: JRL

Monaco



Phase 1	14 units
Phase 2	188 units
<b>Total</b>	<b>202 units</b>



## Churchill War Rooms London SW1

The underground nerve centre where the British government directed the Second World War and the award-winning Churchill Museum.

Client: Stanhope  
Architect: Buro Happold  
Contractor: Jigsaw Security

Barcelona



<b>Total</b>	<b>46 units</b>
--------------	-----------------



# Case studies

## 78 St James's Street

London SW1A

A Grade II listed building that was HSBC HQ, the landmark project brings a suite of high-quality business facilities to this central London location.

Client: BentallGreenOak  
Architect: Squire & Partners  
Contractor: MACE

Vienna



Total

41 units



## Eighty Strand

London WC2

Originally built in 1931, Eighty Strand is a redevelopment of the Grade II listed building containing 156,000 sq ft of flexible floor space in London WC2.

Client: Pearson  
Architect: PDP London  
Contractor: Sir Robert McAlpine

Vienna



Total

27 units



# In practice

## How it works

---

EvacLite signage connects to your building's existing fire system. The fire panel instructs the signs how to react appropriately when an alarm is triggered. It is compatible with all leading fire systems and can replace or supplement your existing signage.

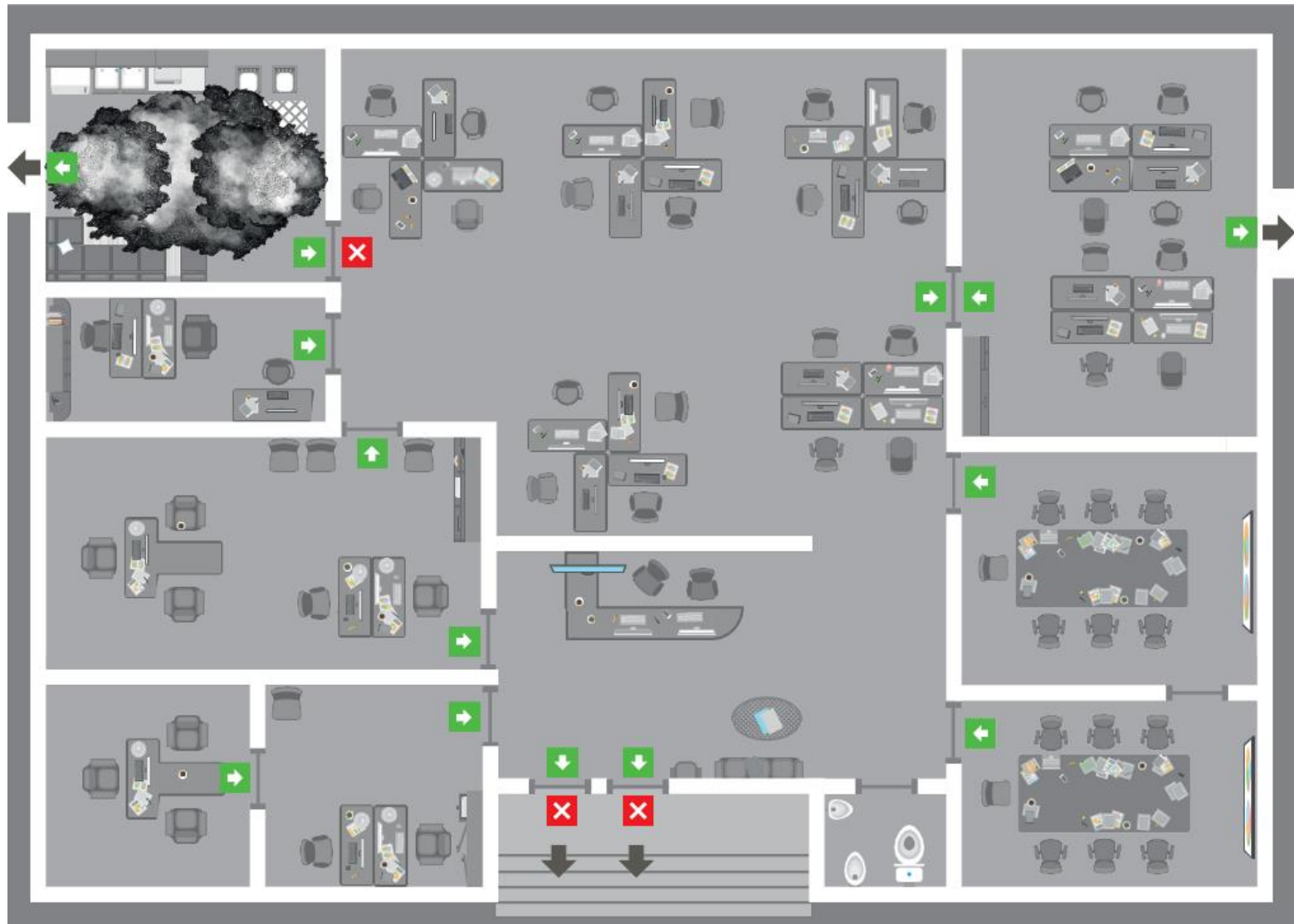
The illustration below shows a typical office space with three exits. Signs are placed at all the points where an exit option is available. The office space is zoned and the fire panel is programmed in accordance with these zones.

For example, should smoke or a fire be detected in zone 1, an alarm sounds and the signage comes to life.

The occupants are directed away from the compromised exits within the zone in which the fire was detected by use of red crosses. Instead they are directed towards a safe exit route, and out of the building, by pulsing green arrows.

The nature of the signage enables it to adapt to further instructions from the fire panel as the situation develops. Wherever there is a red cross, a green arrow will always be visible.

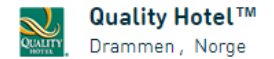
The clear directions help to keep people calm, facilitating fast and accurate decision making and enabling a fast, safe exit.



## Customers

### Today

Our Dynamic Emergency Exit Signage is already installed within over **200 sites** and specified into future landmark developments.



# Customers

## Quotes

---

“I believe these signs are an important contribution to safety.” **Sean Pollard, Operations Manager, Cogent Projects**

“Evaclite’s adaptive emergency exit signage provided clear instruction to the user where with a conventional system, there could be confusion.” **Joe Tarrant, Meridian Electrical Contractors**

“This was the first time we’d worked with this type of system, and it’s really impressive.” **James Colyer, Project Manager, FAFS Fire and Security**

“The signs were available the same day, and the service was good and the product straight forward to install.” **Brett Crawlbeck, operations Director, IMEX**

““ Intelligent Active Dynamic Signage System: Bringing the Humble Emergency Exit Sign into the 21st Century ””  
*Edwin R. Galea, Hui Xie, and Peter Lawrence are with Fire Safety Engineering Group, University of Greenwich*